

Shown: H-7202, A-66, HF-95Y, CR-400, AH-650, A-64



▶ Use genuine Enerpac manifolds, couplers and hoses to connect your workholding cylinders or fixtures to the hydraulic power source.

A series, Manifolds

For multiple hydraulic line connections at one central location directing oil to or from a pressure source.

C series, High-Flow Couplers

High pressure coupler recommended for use on all Enerpac pumps and cylinders

AH, AR series, Couplers

Quick disconnect low leakage couplers for easy connection of hydraulic circuits.

H-700 series, Hoses

High pressure hydraulic hoses, for demanding applications, featuring a 4:1 design factor.

Options

Fittings

110 ▶



Gauges and accessories

106 ▶



Manifolds

- Easy to connect
- Mounting holes on all models

Couplers

- Spee-D-Coupler® design allows cylinder to be connected and disconnected in seconds
- For more safety: couplers cannot be connected or disconnected while under hydraulic pressure

Thermo-plastic safety hoses

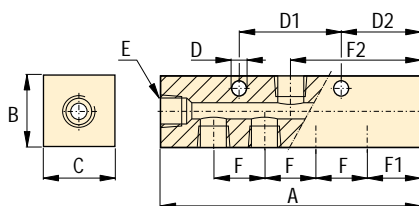
- Maximum working pressure of 700 bar
- Four layer design, including two high strength wire braids
- Outside jacket is polyurethane, to provide maximum abrasion resistance

⚠ Important

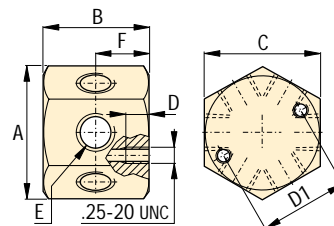
Do not exceed the maximum pressure.

Inspect hoses and hydraulic lines frequently and replace as required.

A-64, -65



A-66



Manifolds dimensions in mm [⌀]

Number of ports	Model number	A	B	C	D	D1	D2	E	F	F1	F2	kg
7	A-64 ¹⁾	178	32	32	6,3	76	32	.375-18 NPT	38	32	89	1,5
7	A-65 ¹⁾	368	32	32	6,3	203	32	.375-18 NPT	102	32	184	2,7
6	A-66 ¹⁾	58	42	51	13,2	38	-	.375-18 NPT	-	-	-	0,9

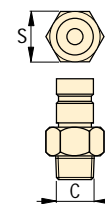
¹⁾ Note: Maximum operating pressure of A-64, A-65 and A-66: 700 bar

Thermoplastic Safety Hoses

Hose length m	Hose End one	Hose End two	Internal diameter mm	Model number	Maximum pressure bar	kg
0,6	3/8" NPT	3/8" NPT	6,4	H-7202	700	0,5
0,9	3/8" NPT	3/8" NPT	6,4	H-7203	700	0,7
1,8	3/8" NPT	3/8" NPT	6,4	H-7206	700	0,9
3,0	3/8" NPT	3/8" NPT	6,4	H-7210	700	1,4

Couplers

Maximum pressure bar	Maximum oil flow l/min	Modelnr. Coupler complete	Modelnr. Female half	Modelnr. Male half	Thread size C	S mm
700	40	C-604	CR-400	CH-604	3/8" NPT	22
700	40	A-604	AR-400	AH-604	3/8" NPT	19
350	17	-	AR-650 ¹⁾	AH-650	1/4" NPT	17,5
350	17	-	AR-650 ¹⁾	AH-652	G1/4"	17,5
350	17	-	AR-650 ¹⁾	AH-654	SAE #4	17,5



¹⁾ Note: Thread size AR-650 is 1/4" NPT, dimension S is 20,6 mm. Use FZ-1055 Fitting to connect to 3/8" NPT Hose ends.