

# Rotary couplers *Application & selection*

Shown: CRV-222, CR-112

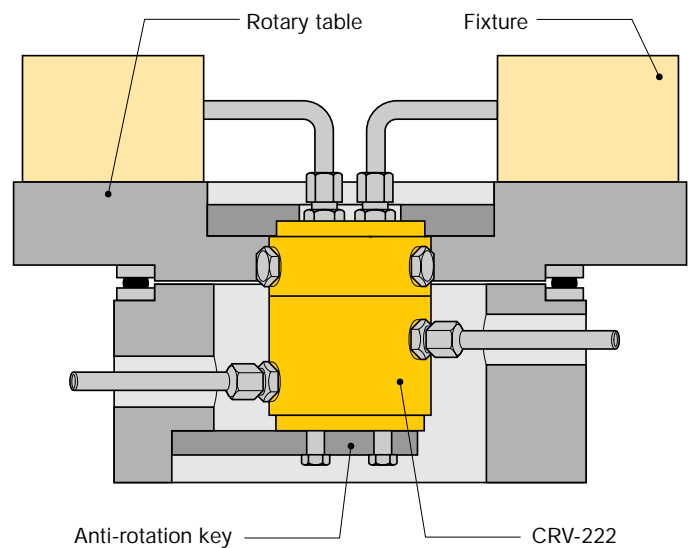


▶ Rotary couplers are specially designed unions to transfer pressurized fluid from a stationary supply line to a rotating device. Used for workholding or clamping device such as fixtures installed on rotating index tables.

## Permanent hydraulic connection on indexing and rotating work stations

- High rotation per minute
- Low starting torque
- Internal oil bearings for increased lifetime
- Single, 2 or 4 passage coupler type

## Rotary coupler operation



■ In this application 8 CRV-222 rotary couplers are installed to power the individual presses of an 8 station rotary press table.



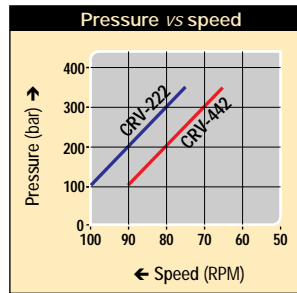
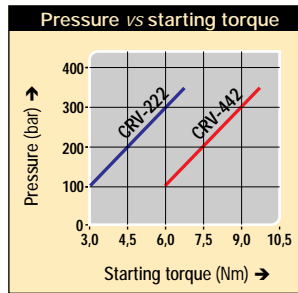
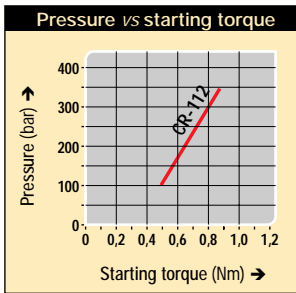
## Product selection

Number of radial passages	Model number <sup>1)</sup>	Operating pressure range	Maximum speed		Starting torque	
			RPM		Nm	
			bar	100 bar	350 bar	100 bar
1	CR-112	100-350	30	30	0,5	0,9
2	CRV-222	100-350	100	75	3,0	7,0
4	CRV-442	100-350	90	65	6,0	10,0

<sup>1)</sup> Before selecting, note the starting torque and speed diagrams on the next page. Maximum oilflow 9 l/min.



## Starting torque and speed diagrams



Max. operating speed = 30 RPM.  
Max. oilflow 9 l/min.

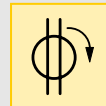
Oil loss CRV-222 = 20 cm<sup>3</sup>/h, CRV-442 = 40 cm<sup>3</sup>/h

Passages: 1-4 lines

Speed: 30-100 RPM max

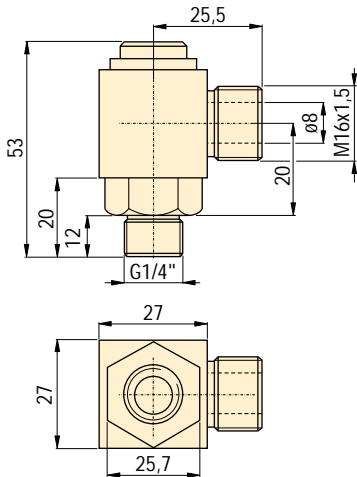
Pressure: 100 - 350 bar

- E** Acoplamiento giratorios
- F** Joints tournants
- D** Drehdurchführungen

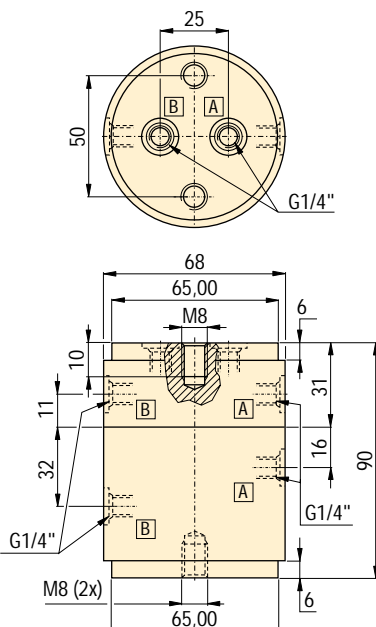


## Product dimensions in mm [⌀]

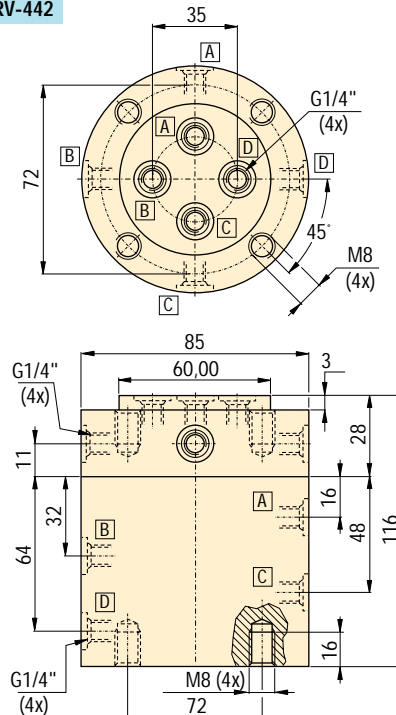
### CR-112



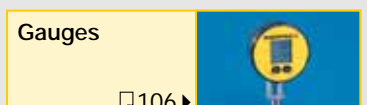
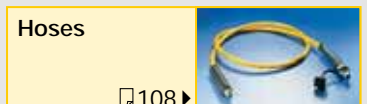
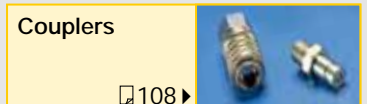
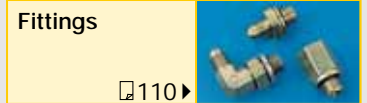
### CRV-222



### CRV-442



## Options



## Important

Before selecting, note the pressure versus starting torque diagrams.

Rotary couplers must be mounted in the center of rotation of the installation.

Anti-rotation keys should be utilized.