

W-Series, Low Profile Hexagon Wrenches

▼ Shown: Drive units with interchangeable cassettes



Rigid Steel Design

The *Professional* Low Profile Solution



W-Series, Low Profile Torque Wrenches

This product range has been designed using state-of-the-art CAD techniques to bring you the most advanced low profile torque wrench on the market. Safety, quality, toughness and reliability are built in.

During the design process every prototype was put through finite element stress analysis, photo-elastic modelling, rigorous cyclic testing and strain gauging.

Simplicity

- No tools are needed for changing the hexagon cassettes
- Innovative, pinless wrench construction incorporates quick release cylinder and automatic crank engagement
- Single 360° hydraulic swivel manifold complete with screw lock couplings increases wrench and hose maneuverability.

Design

- Cylinders and low profile cassettes have been engineered to give ultra slim, compact low clearance tooling with a small nose radius
- Robust design with minimal parts enables easy on-site maintenance without special tools
- Nut sizes covered range from 30 - 115 mm (1 $\frac{1}{8}$ - 4 $\frac{5}{8}$ inch)
- Optimized strength-to-weight ratio
- Fast operation due to the large nut rotation per wrench cycle (30 degree rotation angle) and rapid return stroke.

Reliability

- All wrenches are nickel-plated for excellent corrosion protection and improved durability in harsh environments
- All wrenches are fitted with bronze bushings to ensure the ratchet will never seize in the sideplates, thus eliminating costly repairs.

Accuracy

- Constant torque output provides high accuracy across the full stroke
- In-line reaction foot ensures accuracy by reducing internal deflections.



TSP - Pro Series Swivel

Featuring Tilt and Swivel technology the TSP provides 360° X-axis rotation and 160° Y-axis rotation.

How to Order

Order as an accessory which can be fitted to existing W-Series wrenches.

Factory fitted to new W-Series wrenches: Suffix the wrench model number with "-P" e.g.: **W2000-P**.

Page: 

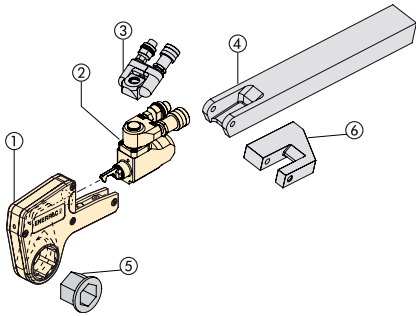


Torque Wrench Hoses

Use Enerpac THQ-700 Series hoses with W-Series torque wrenches to ensure the integrity of your hydraulic system.

6 m long, 2 hoses	THQ-706T
12 m long, 2 hoses	THQ-712T

Double-Acting Hydraulic Hexagon Torque Wrenches



- ① Hexagon Cassette
- ② Drive Unit
- ③ Pro Series Swivel
- ④ Extended Reaction Arm
- ⑤ Reducer Insert
- ⑥ Reaction Paddle



Hexagon Cassettes and Reducer Inserts

Maximum versatility with the full range of interchangeable hexagon cassettes and hexagon reducing inserts is available in metric and inch sizes.

Page: 14

W Series



Maximum Torque at 700 bar:

20.337 Nm / 15.000 Ft.lbs

Hexagon Range:

30-115 mm / 1 1/8-4 5/8 inch

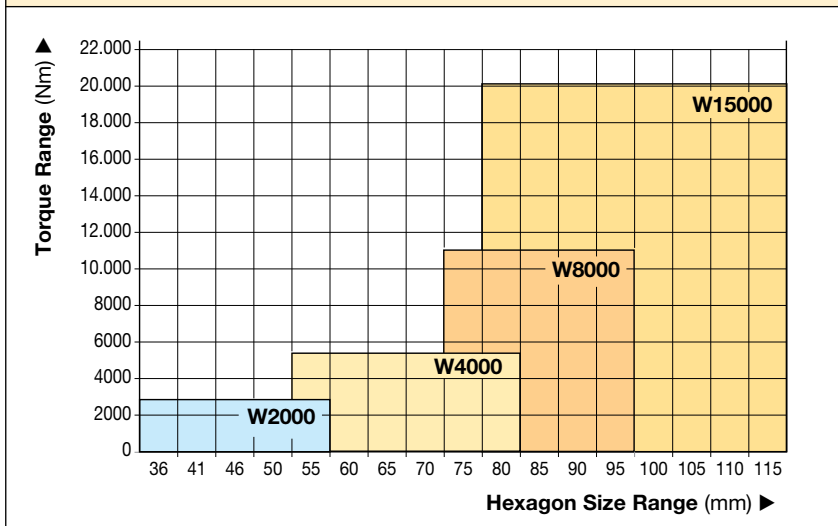
Nose Radius:

31 - 87,5 mm

Maximum Operating Pressure:

700 bar

DRIVE UNIT AND INTERCHANGEABLE CASSETTE SELECTION

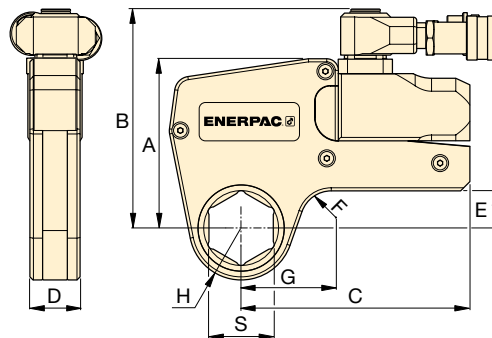


Torque Wrench Pump Selection Matrix

For optimum speed and performance see the torque wrench and pump matrix.

Page: 28

▼ These rigid steel wrenches with low profile interchangeable hexagon cassettes guarantee durability and maximum versatility in bolting applications.



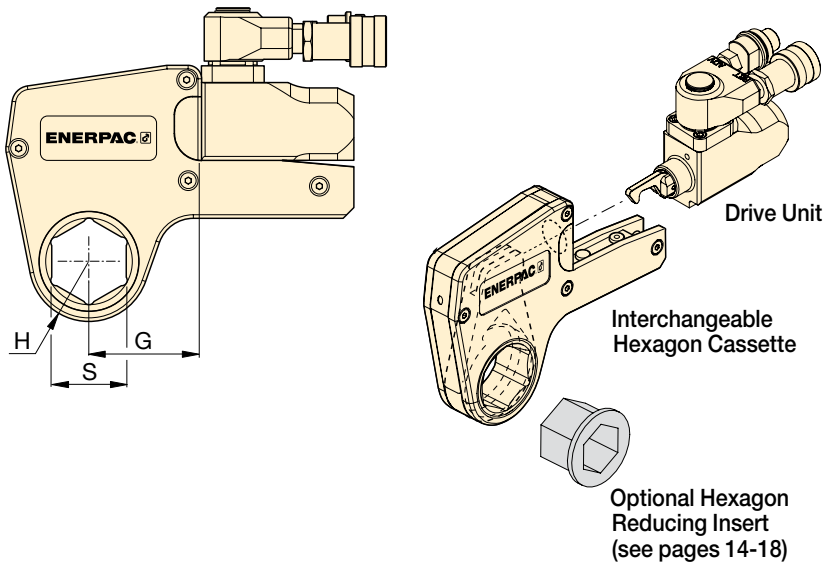
▼ SELECTION CHART

Hexagon Range *		Maximum Torque at 700 bar		Drive Unit Model Number **	Minimum Torque		Dimensions (see pages 14-18 for dimensions H and G)						Weight (drive unit without hexagon cassette)
(mm)	(inch)	(Nm)	(Ft.lbs)		(Nm)	(Ft.lbs)	(mm)						
						A	B	C	D	E	F	(kg)	
30 - 60	1 1/8 - 2 3/8	2712	2000	W2000	271	200	109	141	148	32,0	24,0	20	1,4
36 - 85	1 5/16 - 3 3/8	5423	4000	W4000	542	400	136	167	178	41,0	32,8	20	2,0
50 - 105	1 7/8 - 4 1/8	10.846	8000	W8000	1084	800	172	205	208	52,5	41,9	25	3,0
65 - 115	2 7/16 - 4 5/8	20.337	15.000	W15000	2033	1500	207	240	253	63,0	50,0	20	5,0

* With in-line reaction foot.

** To order a W-series wrench fitted with the TSP swivel, suffix the model number with "-P", e.g., W2000-P.

W2000 Series, Inch-Cassettes & Reducer Inserts



W Series






Maximum Torque at 700 bar:
2712 Nm

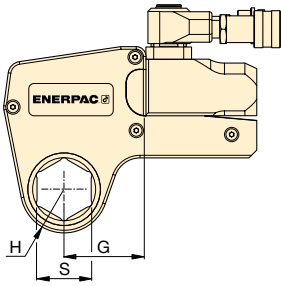
Hexagon Range:
1¹/₈ - 2³/₈ inch

Maximum Operating Pressure:
700 bar

▼ SELECTION CHART

Drive Unit Model Number	Hexagon Size S	Nose Radius H	G	Model Number	Weight						
						Hexagon Reducer (inch)	Model Number	Hexagon Reducer (inch)	Model Number	Hexagon Reducer (inch)	Model Number
W2000	1 ¹ / ₈	31,0	53,7	W2102	2,1	–	–	–	–	–	–
	1 ³ / ₁₆	31,0	53,7	W2103	2,1	–	–	–	–	–	–
	1 ¹ / ₄	31,0	53,7	W2104	2,1	–	–	–	–	–	–
	1 ⁵ / ₁₆	31,0	53,7	W2105	2,1	–	–	–	–	–	–
	1 ³ / ₈	31,0	53,7	W2106	2,1	–	–	–	–	–	–
	1 ⁷ / ₁₆	31,0	53,7	W2107	2,1	1 ⁷ / ₁₆ - 1 ¹ / ₈	W2107R102	–	–	–	–
	1 ¹ / ₂	33,5	58,2	W2108	2,2	–	–	–	–	–	–
	1 ⁹ / ₁₆	33,5	58,2	W2109	2,2	–	–	–	–	–	–
	1 ⁵ / ₈	33,5	58,2	W2110	2,2	1 ⁵ / ₈ - 1 ¹ / ₄	W2110R104	1 ⁵ / ₈ - 1 ³ / ₁₆	W2110R103	–	–
	1 ¹¹ / ₁₆	36,5	60,5	W2111	2,2	–	–	–	–	–	–
	1 ³ / ₄	36,5	60,5	W2112	2,2	–	–	–	–	–	–
	1 ¹³ / ₁₆	36,5	60,5	W2113	2,2	1 ¹³ / ₁₆ - 1 ⁷ / ₁₆	W2113R107	1 ¹³ / ₁₆ - 1 ¹ / ₄	W2113R104	–	–
	1 ⁷ / ₈	39,0	63,1	W2114	2,2	–	–	–	–	–	–
	1 ¹⁵ / ₁₆	39,0	63,1	W2115	2,2	–	–	–	–	–	–
	2	39,0	63,1	W2200	2,2	2 - 1 ⁵ / ₈	W2200R110	2 - 1 ⁷ / ₁₆	W2200R107	–	–
	2 ¹ / ₁₆	41,8	68,6	W2201	2,3	–	–	–	–	–	–
	2 ¹ / ₈	41,8	68,6	W2202	2,3	–	–	–	–	–	–
	2 ³ / ₁₆	41,8	68,6	W2203	2,3	2 ³ / ₁₆ - 1 ¹³ / ₁₆	W2203R113	2 ³ / ₁₆ - 1 ⁵ / ₈	W2203R110	2 ³ / ₁₆ - 1 ⁷ / ₁₆	W2203R107
	–	–	–	–	–	–	–	–	–	–	–
	2 ¹ / ₄	44,5	64,8	W2204	2,2	–	–	–	–	–	–
2 ⁵ / ₁₆	44,5	64,8	W2205	2,2	–	–	–	–	–	–	
2 ³ / ₈	44,5	64,8	W2206	2,2	2 ³ / ₈ - 2	W2206R200	2 ³ / ₈ - 1 ⁷ / ₈	W2206R114	2 ³ / ₈ - 1 ¹³ / ₁₆	W2206R113	
–	–	–	–	–	2 ³ / ₈ - 1 ¹ / ₂	W2206R108	2 ³ / ₈ - 1 ⁷ / ₁₆	W2206R107	–	–	

W4000 Series, Inch-Cassettes & Reducer Inserts



Maximum Torque at 700 bar:

5423 Nm

Hexagon Range:

1⁵/₁₆ - 3³/₈ inch

Maximum Operating Pressure:

700 bar

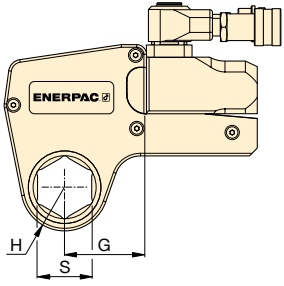
W
Series



▼ SELECTION CHART

Drive Unit Model Number	Hexagon Size S	Nose Radius H	G	Model Number	Weight	Hexagon Reducer		Hexagon Reducer		Hexagon Reducer	
						Hexagon Reducer (inch)	Model Number	Hexagon Reducer (inch)	Model Number	Hexagon Reducer (inch)	Model Number
W4000	1 ⁵ / ₁₆	37,0	61,0	W4105	3,7	-	-	-	-	-	-
	1 ³ / ₈	37,0	61,0	W4106	3,7	-	-	-	-	-	-
	1 ⁷ / ₁₆	37,0	61,0	W4107	3,7	-	-	-	-	-	-
	1 ¹ / ₂	37,0	61,0	W4108	3,7	-	-	-	-	-	-
	1 ⁹ / ₁₆	37,0	61,0	W4109	3,7	-	-	-	-	-	-
	1 ⁵ / ₈	37,0	61,0	W4110	3,7	-	-	-	-	-	-
	1 ¹¹ / ₁₆	39,5	64,0	W4111	3,8	-	-	-	-	-	-
	1 ³ / ₄	39,5	64,0	W4112	3,8	-	-	-	-	-	-
	1 ¹³ / ₁₆	39,5	64,0	W4113	3,8	-	-	-	-	-	-
	1 ⁷ / ₈	41,5	66,7	W4114	3,9	-	-	-	-	-	-
	1 ¹⁵ / ₁₆	41,5	66,7	W4115	3,9	-	-	-	-	-	-
	2	41,5	66,7	W4200	3,9	2 - 1 ⁷ / ₈	W4200R107	-	-	-	-
	2 ¹ / ₁₆	44,0	73,4	W4201	4	-	-	-	-	-	-
	2 ¹ / ₈	44,0	73,4	W4202	4	-	-	-	-	-	-
	2 ³ / ₁₆	44,0	73,4	W4203	4	2 ³ / ₁₆ - 1 ⁵ / ₈	W4203R110	2 ³ / ₁₆ - 1 ⁷ / ₁₆	W4203R107	2 ³ / ₁₆ - 1 ¹ / ₄	W4203R104
	2 ¹ / ₄	46,5	70,6	W4204	4,1	-	-	-	-	-	-
	2 ⁵ / ₁₆	46,5	70,6	W4205	4,1	-	-	-	-	-	-
	2 ³ / ₈	46,5	70,6	W4206	4,1	2 ³ / ₈ - 2	W4206R200	2 ³ / ₈ - 1 ¹³ / ₁₆	W4206R113	2 ³ / ₈ - 1 ⁷ / ₁₆	W4206R107
	-	-	-	-	-	2 ³ / ₈ - 1 ³ / ₈	W4206R106	-	-	-	-
	2 ⁷ / ₁₆	49,5	76,2	W4207	4,1	2 ⁷ / ₁₆ - 2	W4207R200	-	-	-	-
	2 ¹ / ₂	49,5	76,2	W4208	4,1	2 ¹ / ₂ - 2	W4208R200	2 ¹ / ₂ - 1 ¹³ / ₁₆	W4208R113	-	-
	2 ⁹ / ₁₆	49,5	76,2	W4209	4,1	2 ⁹ / ₁₆ - 2 ³ / ₁₆	W4209R203	2 ⁹ / ₁₆ - 2 ¹ / ₈	W4209R202	2 ⁹ / ₁₆ - 2 ¹ / ₁₆	W4208R201
	-	-	-	-	-	2 ⁹ / ₁₆ - 2	W4209R200	2 ⁹ / ₁₆ - 2 ¹³ / ₁₆	W4209R113	-	-
	2 ⁵ / ₈	52,5	78,3	W4210	4,2	-	-	-	-	-	-
	2 ¹¹ / ₁₆	52,5	78,3	W4211	4,2	-	-	-	-	-	-
	2 ³ / ₄	52,5	78,3	W4212	4,2	2 ³ / ₄ - 2 ³ / ₈	W4212R206	2 ³ / ₄ - 2 ³ / ₁₆	W4212R203	2 ³ / ₄ - 2 ¹ / ₈	W4212R202
	2 ¹³ / ₁₆	55,3	81,6	W4213	4,3	-	-	-	-	-	-
	2 ⁷ / ₈	55,3	81,6	W4214	4,3	-	-	-	-	-	-
	2 ¹⁵ / ₁₆	55,3	81,6	W4215	4,3	2 ¹⁵ / ₁₆ - 2 ⁹ / ₁₆	W4215R209	2 ¹⁵ / ₁₆ - 2 ³ / ₈	W4215R206	2 ¹⁵ / ₁₆ - 2 ³ / ₁₆	W4215R203
	-	-	-	-	-	2 ¹⁵ / ₁₆ - 2	W4215R200	-	-	-	-
	3	58,5	83,5	W4300	4,4	3 - 2 ³ / ₁₆	W4300R203	-	-	-	-
	3 ¹ / ₁₆	58,5	83,5	W4301	4,4	-	-	-	-	-	-
	3 ¹ / ₈	58,5	83,5	W4302	4,4	3 ¹ / ₈ - 2 ³ / ₄	W4302R212	3 ¹ / ₈ - 2 ⁹ / ₁₆	W4302R209	3 ¹ / ₈ - 2 ³ / ₈	W4302R206
	-	-	-	-	-	3 ¹ / ₈ - 2 ⁹ / ₁₆	W4302R205	3 ¹ / ₈ - 2 ¹ / ₄	W4302R204	3 ¹ / ₈ - 2 ³ / ₁₆	W4302R203
	-	-	-	-	-	3 ¹ / ₈ - 2 ¹ / ₈	W4302R202	3 ¹ / ₈ - 2	W4302R200	-	-
	3 ³ / ₁₆	62,0	85,5	W4303	4,5	-	-	-	-	-	-
3 ¹ / ₄	62,0	85,5	W4304	4,5	-	-	-	-	-	-	
3 ⁵ / ₁₆	62,0	85,5	W4305	4,5	-	-	-	-	-	-	
3 ³ / ₈	62,0	85,5	W4306	4,5	-	-	-	-	-	-	

W8000 Series, Inch-Cassettes & Reducer Inserts



Maximum Torque at 700 bar:

10.846 Nm

Hexagon Range:

1 7/8 - 4 1/8 inch

Maximum Operating Pressure:

700 bar

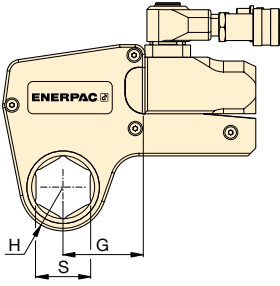
W
Series



▼ SELECTION CHART

Drive Unit Model Number	Hexagon Size S	Nose Radius H	G	Model Number	Weight	Hexagon Reducer		Hexagon Reducer		Hexagon Reducer	
						Hexagon Reducer (inch)	Model Number	Hexagon Reducer (inch)	Model Number	Hexagon Reducer (inch)	Model Number
W8000	1 7/8	45,0	78,2	W8114	8,1	-	-	-	-	-	-
	1 15/16	45,0	78,2	W8115	8,1	-	-	-	-	-	-
	2	45,0	78,2	W8200	8,1	-	-	-	-	-	-
	2 1/16	48,0	80,0	W8201	8,1	-	-	-	-	-	-
	2 1/8	48,0	80,0	W8202	8,1	-	-	-	-	-	-
	2 3/16	48,0	80,0	W8203	8,1	-	-	-	-	-	-
	2 1/4	51,0	82,5	W8204	8,1	-	-	-	-	-	-
	2 5/16	51,0	82,5	W8205	8,1	-	-	-	-	-	-
	2 3/8	51,0	82,5	W8206	8,1	-	-	-	-	-	-
	2 7/16	52,5	85,9	W8207	8,1	-	-	-	-	-	-
	2 1/2	52,5	85,9	W8208	8,1	-	-	-	-	-	-
	2 9/16	52,5	85,9	W8209	8,1	2 9/16 - 2	W8209R200	-	-	-	-
	2 5/8	56,0	84,8	W8210	8,1	-	-	-	-	-	-
	2 11/16	56,0	84,8	W8211	7,9	-	-	-	-	-	-
	2 3/4	56,0	84,8	W8212	7,9	2 3/4 - 2 3/16	W8212R203	-	-	-	-
	2 13/16	58,0	85,0	W8213	7,9	-	-	-	-	-	-
	2 7/8	58,0	85,0	W8214	7,9	-	-	-	-	-	-
	2 15/16	58,0	85,0	W8215	7,9	2 15/16 - 2 3/8	W8215R206	2 15/16 - 2 3/16	W8215R203	-	-
	3	60,5	89,5	W8300	8,0	-	-	-	-	-	-
	3 1/16	60,5	89,5	W8301	8,0	-	-	-	-	-	-
	3 1/8	60,5	89,5	W8302	8,0	3 1/8 - 2 9/16	W8302R209	3 1/8 - 2 3/8	W8302R206	3 1/8 - 2 3/16	W8302R203
	-	-	-	-	-	-	3 1/8 - 2	W8302R200	-	-	-
	3 3/16	66,0	92,2	W8303	8,2	-	-	-	-	-	-
	3 1/4	66,0	92,2	W8304	8,2	-	-	-	-	-	-
	3 5/16	66,0	92,2	W8305	8,2	-	-	-	-	-	-
	3 3/8	66,0	92,2	W8306	8,2	-	-	-	-	-	-
	3 7/16	66,0	92,2	W8307I	8,2	-	-	-	-	-	-
	3 1/2	66,0	92,2	W8308	8,2	3 1/2 - 3	W8308R300	3 1/2 - 2 15/16	W8308R215	3 1/2 - 2 3/4	W8308R212
	3 9/16	74,0	102,9	W8309	8,8	-	-	-	-	-	-
	3 5/8	74,0	102,9	W8310	8,8	-	-	-	-	-	-
	3 11/16	74,0	102,9	W8311	8,8	-	-	-	-	-	-
	3 3/4	74,0	102,9	W8312	8,8	3 3/4 - 3 1/8	W8312R302	3 3/4 - 2 15/16	W8312R215	3 3/4 - 2 3/4	W8312R212
3 13/16	74,0	102,9	W8313	8,8	-	-	-	-	-	-	
3 7/8	74,0	102,9	W8314	8,8	3 7/8 - 3 1/8	W8314R302	3 7/8 - 2 15/16	W8314R215	-	-	
3 15/16	79,5	110,0	W8315	9,3	-	-	-	-	-	-	
4	79,5	110,0	W8400	9,3	-	-	-	-	-	-	
4 1/16	79,5	110,0	W8401I	9,3	-	-	-	-	-	-	
4 1/8	79,5	110,0	W8402	9,3	-	-	-	-	-	-	

W15000 Series, Inch-Cassettes & Reducer Inserts



Maximum Torque at 700 bar:

20.337 Nm

Hexagon Range:

2⁷/₁₆ - 4⁵/₈ inch

Maximum Operating Pressure:

700 bar

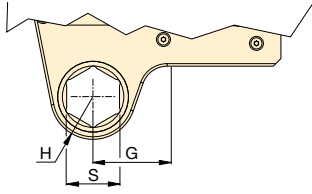
W
Series



▼ SELECTION CHART

Drive Unit Model Number	Hexagon Size S	Nose Radius H	G	Model Number	Weight	Hexagon Reducer		Hexagon Reducer		Hexagon Reducer	
						Hexagon Reducer (inch)	Model Number	Hexagon Reducer (inch)	Model Number	Hexagon Reducer (inch)	Model Number
W15000	2 ⁷ / ₁₆	59,0	88,6	W15207	13,6	-	-	-	-	-	-
	2 ¹ / ₂	59,0	88,6	W15208	13,6	-	-	-	-	-	-
	2 ⁹ / ₁₆	59,0	88,6	W15209	13,6	-	-	-	-	-	-
	2 ⁵ / ₈	59,0	88,6	W15210	13,6	-	-	-	-	-	-
	2 ¹¹ / ₁₆	59,0	88,6	W15211	13,6	-	-	-	-	-	-
	2 ³ / ₄	59,0	88,6	W15212	13,6	-	-	-	-	-	-
	2 ¹³ / ₁₆	62,0	90,5	W15213	13,7	-	-	-	-	-	-
	2 ⁷ / ₈	62,0	90,5	W15214	13,7	-	-	-	-	-	-
	2 ¹⁵ / ₁₆	62,0	90,5	W15215	13,7	-	-	-	-	-	-
	3	64,5	92,9	W15300	13,8	3 - 2 ¹ / ₈	W15300R202	-	-	-	-
	3 ¹ / ₁₆	64,5	92,9	W15301	13,8	-	-	-	-	-	-
	3 ¹ / ₈	64,5	92,9	W15302	13,8	3 ¹ / ₈ - 2 ⁹ / ₁₆	W15302R209	-	-	-	-
	3 ³ / ₁₆	69,5	96,6	W15303	14,1	-	-	-	-	-	-
	3 ¹ / ₄	69,5	96,6	W15304	14,1	-	-	-	-	-	-
	3 ⁵ / ₁₆	69,5	96,6	W15305	14,1	-	-	-	-	-	-
	3 ³ / ₈	69,5	96,6	W15306	14,1	-	-	-	-	-	-
	3 ⁷ / ₁₆	69,5	96,6	W15307I	14,1	-	-	-	-	-	-
	3 ¹ / ₂	69,5	96,6	W15308	14,1	3 ¹ / ₂ - 2 ¹⁵ / ₁₆	W15308R215	3 ¹ / ₂ - 2 ³ / ₄	W15308R212	-	-
	3 ⁹ / ₁₆	75,0	101,8	W15309	14,6	-	-	-	-	-	-
	3 ⁵ / ₈	75,0	101,8	W15310	14,6	-	-	-	-	-	-
	3 ¹¹ / ₁₆	75,0	101,8	W15311	14,6	-	-	-	-	-	-
	3 ³ / ₄	75,0	101,8	W15312	14,6	3 ³ / ₄ - 3 ¹ / ₈	W15312R302	3 ³ / ₄ - 2 ¹⁵ / ₁₆	W15312R215	-	-
	3 ¹³ / ₁₆	75,0	101,8	W15313	14,5	-	-	-	-	-	-
	3 ⁷ / ₈	75,0	101,8	W15314	14,5	3 ⁷ / ₈ - 3 ¹ / ₈	W15314R302	3 ⁷ / ₈ - 2 ¹⁵ / ₁₆	W15314R215	-	-
	3 ¹⁵ / ₁₆	80,5	103,1	W15315	14,8	-	-	-	-	-	-
	4	80,5	103,1	W15400	14,8	-	-	-	-	-	-
	4 ¹ / ₁₆	80,5	103,1	W15401I	14,8	-	-	-	-	-	-
	4 ¹ / ₈	80,5	103,1	W15402	14,8	4 ¹ / ₈ - 3 ¹ / ₂	W15402R308	4 ¹ / ₈ - 3 ⁵ / ₁₆	W15402R305	4 ¹ / ₈ - 3 ¹ / ₄	W15402R304
	4 ³ / ₁₆	80,5	103,1	W15403I	14,8	-	-	-	-	-	-
	4 ¹ / ₄	80,5	103,1	W15404	14,8	4 ¹ / ₄ - 3 ¹ / ₂	W15404R308	4 ¹ / ₄ - 3 ¹ / ₈	W15404R302	-	-
	4 ⁵ / ₁₆	87,5	114,8	W15405	15,1	-	-	-	-	-	-
	4 ³ / ₈	87,5	114,8	W15406	15,1	-	-	-	-	-	-
4 ⁷ / ₁₆	87,5	114,8	W15407	15,1	-	-	-	-	-	-	
4 ¹ / ₂	87,5	114,8	W15408I	15,1	-	-	-	-	-	-	
4 ⁹ / ₁₆	87,5	114,8	W15409I	15,1	-	-	-	-	-	-	
4 ⁵ / ₈	87,5	114,8	W15410I	15,1	4 ⁵ / ₈ - 3 ¹⁵ / ₁₆	W15410R315	4 ⁵ / ₈ - 3 ⁷ / ₈	W15410R314	4 ⁵ / ₈ - 3 ³ / ₄	W15410R312	
-	-	-	-	-	-	4 ⁵ / ₈ - 3 ¹ / ₂	W15410R308	-	-	-	

W Series, Metric Cassettes and Reducer Inserts






Hexagon Range:

30 - 115 mm

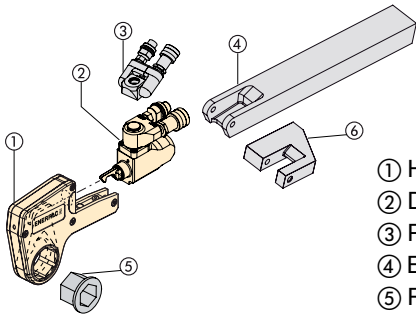
Maximum Operating Pressure:

700 bar

▼ SELECTION CHART

Drive Unit Model Number	Hexagon Size S (mm)	Nose Radius H (mm)	G (mm)	Model Number	Weight (kg)						
						Hexagon Reducer (mm)	Model Number	Hexagon Reducer (mm)	Model Number	Hexagon Reducer (mm)	Model Number
W2000	30	31,0	53,7	W2103	2,1	-	-	-	-	-	-
	32	31,0	53,7	W2104	2,1	-	-	-	-	-	-
	36	31,0	53,7	W2107	2,1	-	-	-	-	-	-
	38	33,5	58,2	W2108	2,2	-	-	-	-	-	-
	41	33,5	58,2	W2110	2,2	41 - 32	W2110R104	41 - 30	W2110R103	41 - 24	W2110R024M
	46	36,5	60,5	W2113	2,2	46 - 36	W2113R107	46 - 32	W2113R104	-	-
	50	39,0	63,1	W2200	2,2	50 - 41	W2200R110	50 - 36	W2200R107	-	-
	55	41,8	68,6	W2203	2,3	55 - 46	W2203R113	55 - 41	W2203R110	55 - 36	W2203R107
	60	44,5	64,8	W2206	2,2	60 - 50	W2206R200	60 - 46	W2206R113	60 - 41	W2206R110
	-	-	-	-	-	60 - 36	W2206R107	-	-	-	-
W4000	36	37,0	61,0	W4107	3,7	-	-	-	-	-	-
	41	37,0	61,0	W4110	3,7	-	-	-	-	-	-
	46	39,5	64,0	W4113	3,8	-	-	-	-	-	-
	50	41,5	66,7	W4200	3,9	50 - 36	W4200R107	-	-	-	-
	55	44,0	73,4	W4203	4,0	55 - 41	W4203R110	55 - 36	W4203R107	55 - 32	W4203R104
	60	46,5	70,6	W4206	4,1	60 - 50	W4206R200	60 - 46	W4206R113	60 - 36	W4206R107
	65	49,5	76,2	W4209	4,1	65 - 55	W4209R203	65 - 50	W4209R200	65 - 46	W4209R113
	70	52,5	78,3	W4212	4,2	70 - 60	W4212R206	70 - 55	W4212R203	-	-
	75	55,3	81,6	W4215	4,3	75 - 65	W4215R209	75 - 60	W4215R206	-	-
	-	-	-	W4215	-	75 - 55	W4215R203	75 - 50	W4215R200	-	-
	80	58,5	83,5	W4302	4,4	80 - 75	W4302R215	80 - 70	W4302R212	80 - 65	W4302R209
	-	-	-	W4302	-	80 - 55	W4302R203	80 - 50	W4302R200	-	-
	85	62,0	85,5	W4085M	4,5	-	-	-	-	-	-
W8000	50	45,0	78,2	W8200	8,1	-	-	-	-	-	-
	55	48,0	80,0	W8203	8,1	-	-	-	-	-	-
	60	51,0	82,5	W8206	8,1	-	-	-	-	-	-
	65	2,2	85,9	W8209	8,1	65 - 50	W8209R200	-	-	-	-
	70	52,5	84,8	W8212	7,9	70 - 55	W8212R203	-	-	-	-
	75	58,0	85,0	W8215	7,9	75 - 60	W8215R206	75 - 55	W8215R203	-	-
	80	60,5	89,5	W8302	8	80 - 65	W8302R209	80 - 60	W8302R206	80 - 55	W8302R203
	-	-	-	-	-	80 - 50	W8302R200	-	-	-	-
	85	66,0	92,2	W8085M	8,2	85 - 70	W8085R070M	85 - 65	W8085R065M	85 - 60	W8085R060M
	-	-	-	-	-	85 - 55	W8085R055M	-	-	-	-
	90	74,0	102,9	W8090M	8,8	90 - 75	W8090R075M	-	-	-	-
	95	74,0	102,9	W8312	8,8	95 - 80	W8312R302	95 - 75	W8312R215	-	-
	100	79,5	110,0	W8315	9,3	-	-	-	-	-	-
	105	79,5	110,0	W8402	9,3	-	-	-	-	-	-
W15000	65	59,0	88,6	W15209	13,6	-	-	-	-	-	-
	70	59,0	88,6	W15212	13,6	-	-	-	-	-	-
	75	62,0	90,5	W15215	13,7	-	-	-	-	-	-
	80	64,5	92,9	W15302	13,8	80 - 65	W15302R209	-	-	-	-
	85	69,5	96,6	W15085M	14,1	85 - 70	W15085R070M	-	-	-	-
	90	75,0	101,8	W15090M	14,5	90 - 75	W15090R75M	-	-	-	-
	95	75,0	101,8	W15312	14,6	95 - 80	W15312R302	95 - 75	W15312R215	-	-
	100	80,5	103,1	W15315	14,8	-	-	-	-	-	-
	105	80,5	103,1	W15402	14,8	105 - 90	W15402R090M	-	-	-	-
	110	87,5	114,8	W15405	15,1	110 - 95	W15110R095M	-	-	-	-
	115	87,5	114,8	W15115M	15,1	115 - 100	W15115R100M	-	-	-	-

W-Series, Accessories



- ① Hexagon Cassette
- ② Drive Unit
- ③ Pro Series Swivel
- ④ Extended Reaction Arm
- ⑤ Reducer Insert
- ⑥ Reaction Paddle

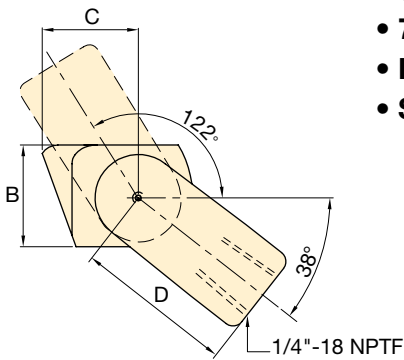
For
W
Series



Maximum Torque at 700 bar:

20.337 Nm

TSP Series



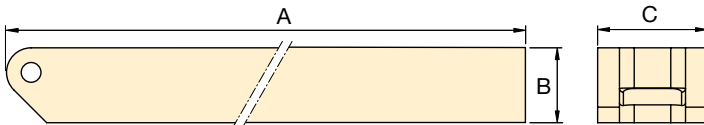
- Pro Series Swivel featuring Tilt and Swivel technology
- 360 degree X-axis and 160 degree Y-axis rotation
- 700 bar maximum working pressure
- Increases tool fit in restricted access areas
- Simplifies hose placement.

For Wrench Model	Model Number	Dimensions (mm)				Weight (kg)
		A	B	C	D	
W2000, W4000	TSP100	64,0	26,9	23,1	40,6	0,2
W8000, W15000	TSP200	67,1	26,9	25,9	41,9	0,2

To order a W-series wrench fitted with the TSP swivel, suffix the model number with "-P". e.g., **W2000-P**.

WTE Series

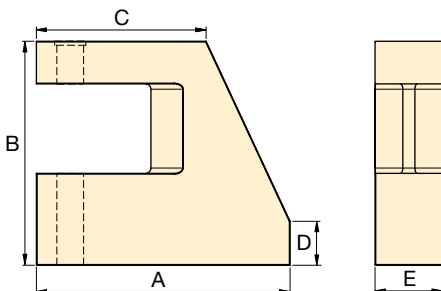
- Extended reaction arm for W-series wrench
- Full torque rated
- Increases tool fit in restricted access areas.



For Wrench Model	Model Number	Dimensions (mm)			Weight (kg)
		A	B	C	
W2000	WTE20	472,5	38,1	55,8	2,6
W4000	WTE40	526,7	50,8	65,7	4,6
W8000	WTE80	545,6	63,5	85,2	7,6
W15000	WTE150	616,4	76,2	101,6	12,0

WRP Series

- Low profile reaction paddle
- Lightweight interchangeable design
- Provides greater flexibility in areas with restricted access.



Wrench Model	Model Number	Dimensions (mm)					Weight (kg)
		A	B	C	D	E	
W2000	WRP20	95,3	84,1	63,7	16,50	25,4	0,4
W4000	WRP40	131,0	109,0	84,1	28,0	31,8	0,8
W8000	WRP80	155,0	136,5	103,7	26,50	45,5	2,0
W15000	WRP150	186,0	165,1	150,8	32,0	50,8	3,9