

Accessory valves *Application & selection*

Shown: HV-1000A, V-17, V-10, V-12, V-152



Accessory valves

Enerpac accessory valves, available in a wide variety and many configurations to control hydraulic pressure or oil flow. These valves are used in conjunction with other valves and system components to provide full automation and control.

Application

Accessory valves are used to automate clamp cycles, prevent pressure loss and provide additional operator and component safety.

Your hydraulic control solution

- Regulate oil flow or system pressure
- All valves feature NPT or SAE porting to insure against leakage at rated pressure
- Can easily be installed in any system
- All valves are painted, coated or plated for corrosion resistance

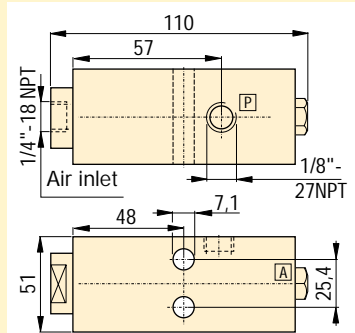
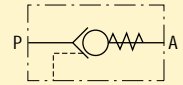
Product selection

Valve type	Maximum pressure bar	Model number	Oil ports
Holding valve, air pilot	210	HV-1000A	1/8" NPT
Holding valve, modular	210	MHV-1	1/8" NPT
Pressure limiting valve	210	PLV-40013B	1/8" NPT
Manual shut-off valve	350	V-12	SAE #4
Auto-damper valve	700	V-10	1/2" NPT
Safety check valve	700	V-17	3/8" NPT
Pressure relief valve	700	V-152	1/8" NPT

Product specification

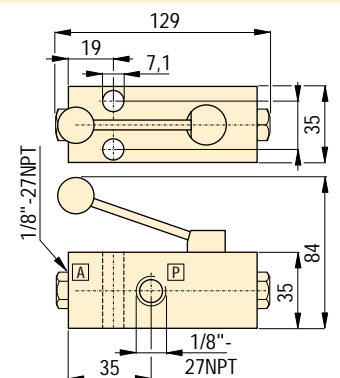
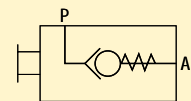
HV-1000A Air pilot holding valve

- Holds fluid under pressure offering independent control of different branches of the same fixture
- Valve can control the pilot air and the booster in sequence
- Max. oil flow 5 l/min
- Works with the VA-42 four-way air valve and a booster



MHV-1 Modular holding valve

- Allows separate operation of clamping fixtures with a single power source
- Ideal for applications when fluid feed lines are impractical. If system pressure is interrupted, the MHV-1 will hold the pressure beyond the valve
- Max. oil flow 5 l/min
- To release system pressure, rotate valve handle in either direction 90° to release and retract system pressure



■ V-17 Safety check valve installed on a fixture.

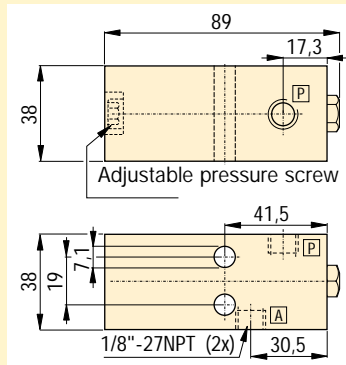
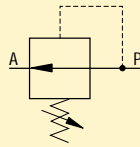




PLV-40013B

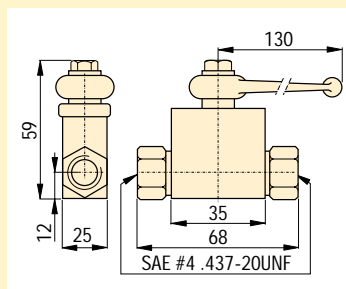
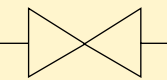
Pressure limiting valve

- Allows precise control of pressures reaching specific clamps
- When pressure build-up reaches a preset level, the valve closes, stabilizing pressure to that section of the fixture
- Pressure adjustment between 14 - 105 bar
- Max. oil flow 5 l/min



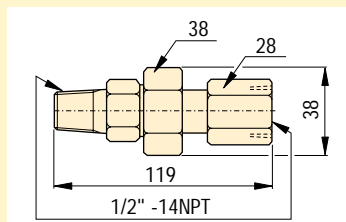
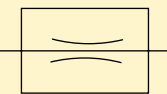
V-12 Manual shut-off valve

- Ball type valve can be used for the master system shut-off or for isolating separate circuits on a fixture
- Viton seals standard
- Straight through design for easy system plumbing and installation
- Fully open allows high flow return of oil
- Max. oil flow 12 l/min



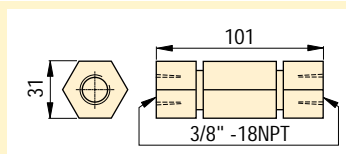
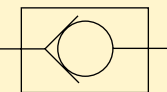
V-10 Auto-damper valve

- To protect gauge during high cycle applications
- Creates a flow resistance when load is released suddenly. No adjustments are necessary
- Fits directly into GA-series gauge adaptor



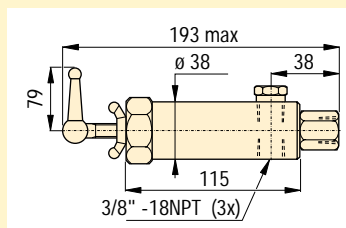
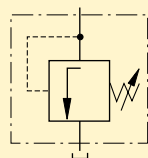
V-17 Safety check valve

- Ruggedly built to resist shock and operate with low pressure drop
- Closes smoothly without pounding
- Max. oil flow 30 l/min



V-152 Pressure relief valve

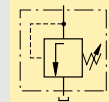
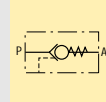
- Limits pressure developed by the pump in hydraulic circuit, thus limiting the force imposed on other components
- 55 - 700 bar adjustment range; ±3% repeatability
- Valve opens whenever preset pressure is reached. To increase pressure setting, turn handle clockwise
- Max. oil flow 30 l/min
- Includes 1 m return line hose kit



Pressure: 0 - 700 bar

Flow max.: 5 - 30 l/min

- E** Válvulas de control
- F** Valves de contrôle
- D** Regelventile



Options

VA-42
Air valve

📄 97 ▶



Gauges and adaptors

📄 106 ▶



Hoses and couplers

📄 108 ▶



Fittings

📄 110 ▶



Important

Valving help
See Basic System Set-up and Valve information in our "Yellow Pages".

📄 113 ▶