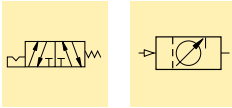




Air Pressure: 0 - 10 bar

- (E) Válvulas de aire
- (F) Valves à air
- (D) Luftventile



Options

Gauges and adaptors

106 ▶



Hoses and couplers

108 ▶



Fittings

110 ▶



To control and regulate air supply

VA-42 Manual operated air valve, 5-way, 2-pos.

- For control of boosters
- Viton seals standard

VAS-42 Solenoid operated air valve 5-way, 2-pos.

- For control of pump and boosters air supply
- Viton seals standard
- Solenoid: 120 VAC, 50/60Hz
- Amperage: inrush 0,11 Amp, holding 0,07 Amp
- Maximum cycle rate: 600 cycles per minute

VR-3 Rapid exhaust valve

- Enables booster to advance and retract faster
- Instantly exhaust air supply from booster to atmosphere

V-19 Air check valve

- Prevent rapid drop of air pressure to the booster in the event of sudden loss of input air

RFL-102 Regulator-Filter-Lubricator

- Regulates air pressure
- Filter air input
- Lubricates air motors with a fine oil vapor mist
- Maximum air flow 1500 l/min

QE-375 Air/Noise silencer

- Reduces noise level of exhaust air from pump to 45 dBa

Shown: VA-42, VAS-42



99_110

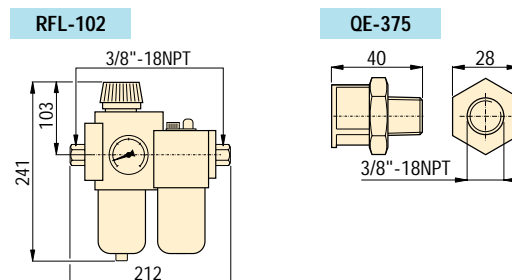
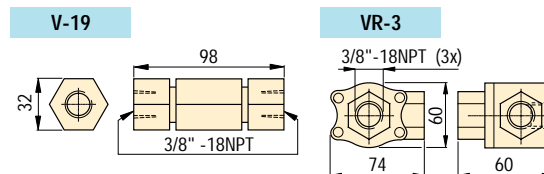
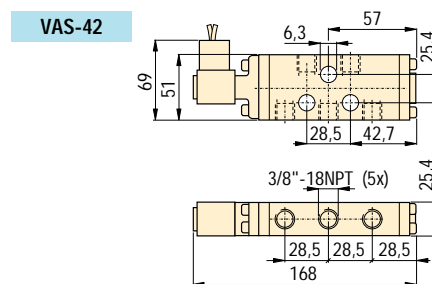
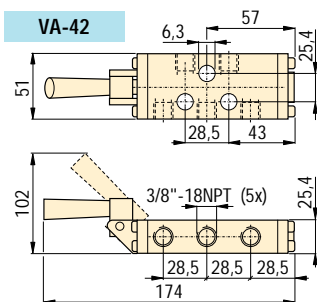
Air valves

Enerpac's line of directional air valves and accessories complete your workholding system. Used to control air operated hydraulic units, they increase your productivity and efficiency.

Application

VA-series directional air valves provide either manual or electric control to air operated hydraulic units. Accessories such as rapid exhaust, check valves, silencers and regulators complete the air control system.

- Accessory valves provide greater safety and more efficient clamping cycles
- Recommended for use with all air powered units
- Directional valves to control booster and pump air supply
- Remote air valve permits either hand or foot operation



Product selection

Maximum pressure	Model number
bar	
▼ Air valves	
2 - 10	VA-42
2 - 10	VAS-42
0 - 7	VR-3
0 - 7	V-19
▼ Accessories	
0 - 9	RFL-102
0 - 9	QE-375