

Shown: VFC-1, VFC-2



VFC-series

Provide repeatable oil flow control. The internal check valve allows metered flow in one direction and free flow in the opposite direction. Precise control is achieved with a micro-meter style adjustment knob, which can be locked with the set screw.

Application

Use VFC-series flow control valves in-line with the Enerpac WE-series workholding pump to protect your components from damage due to high flow rates.

In-line installation of a VFC-1 flow control valve.



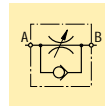
Regulate the flow of oil

- Color coded flow indicator
- Free flow return
- Fine metering capability
- Lockable
- Standard Viton seals

Max. Flow: 38 l/min

Pressure: 0 - 350 bar

- (E) Válv. reguladoras de caudal
- (F) Valves de control débit
- (D) Stromregelventile



Options

Fittings

110 ▶



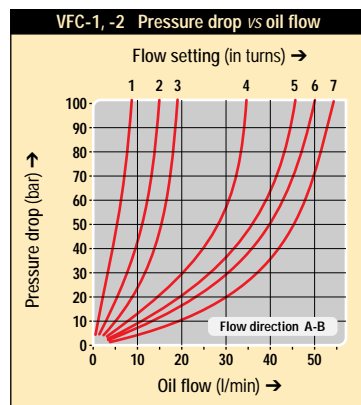
High pressure filters

109 ▶

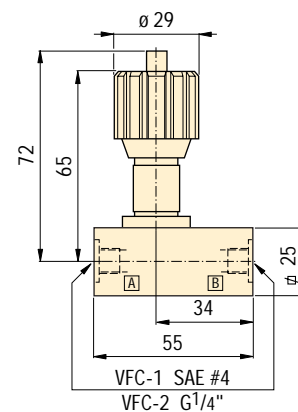


Inline Flow Control Valve

89 ▶



VFC-1, -2



Product selection

Maximum oil flow	Pressure range	Oil ports	Model number	Flow path	Maximum pressure drop	Weight
l/min	bar				bar	kg
▼ Flow control valves						
38	0 - 350	SAE #4	VFC-1		105	0,8
38	0 - 350	G 1/4"	VFC-2		105	0,8

Seal material: Viton.