

Shown: VP-11

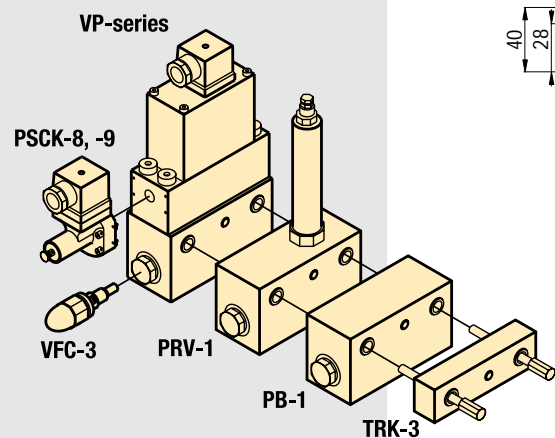


## VP-series

Solenoid directional valves control the direction of the oil flow to each cylinder port.

### Application

VP-valve in combination with all its options in the drawing and photo below. For remote mounting of these valves use WM-10 manifold (□ 90).

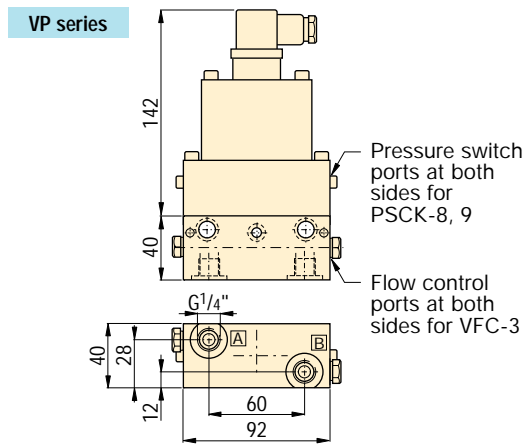


■ Enerpac VP-series valves stackbuilt on a workholding pump.



## Solenoid directional valves

- Dual poppet valve design for zero internal leakage
- Inlet check-valve standard
- High cycle switching
- Stackable to 8 valve stations high
- 17 - 350 bar operational pressure
- Oil flow capacity 7 l/min @ 350 bar
- Oil flow capacity 15 l/min @ 0 bar
- G<sup>1</sup>/<sub>4</sub>" oil connections and integrated filtration

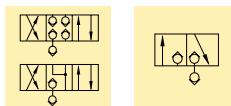


Pressure: 350 bar

Max. Flow: 15 l/min @ 0 bar

Voltage: 24 VDC

- Ⓔ Válvulas de control
- Ⓕ Electro distributeurs
- Ⓖ Wegesitzventile



## Options

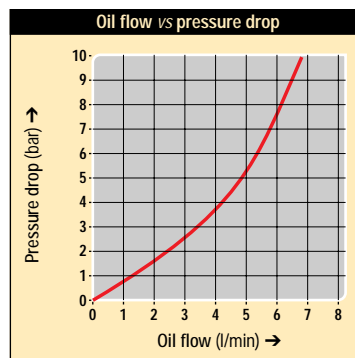
PB-1 Auxiliary block

□ 90 ▶

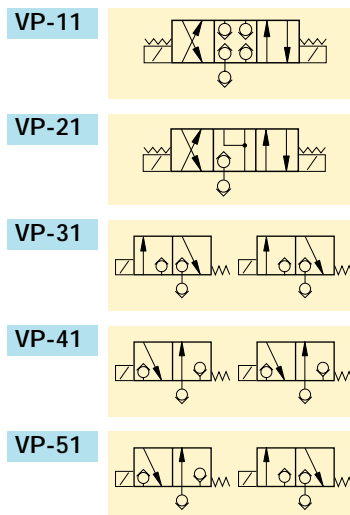


Tie Rod Kits

□ 90 ▶



### Flow Path <sup>1)</sup>



<sup>1)</sup> See page 129 for full hydraulic scheme.

## Product selection

| Voltage @ current                                      | Model number | Used with cylinder(s) |
|--|--------------|-----------------------|
| at 50/60 Hz @ 1,13 Amps                                |              |                       |
| ▼ 4/3 Closed centre                                    |              |                       |
| 24 VDC @ 1,13 A  | VP-11        | 1x DA / 2xSA          |
| ▼ 4/3 Float centre                                     |              |                       |
| 24 VDC @ 1,13 A  | VP-21        | 1x DA / 2xSA          |
| ▼ 3/2 Normally closed                                  |              |                       |
| 24 VDC @ 1,13 A  | VP-31        | 1x DA / 2xSA          |
| ▼ 3/2 Normally open                                    |              |                       |
| 24 VDC @ 1,13 A  | VP-41        | 1x DA / 2xSA          |
| ▼ 3/2 one port normally open, one port normally closed |              |                       |
| 24 VDC @ 1,13 A  | VP-51        | 1x DA / 2xSA          |

Note: DIN 43650 electrical connector included. Valve weight 3,0 kg.