

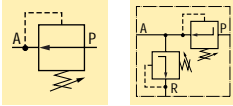
Pressure: 350 bar

Flow: 7 l/min

- (E) Válv. reguladora de presión
- (F) Valve de pression réglable
- (D) Druckreduzierventil

Precise control of hydraulic pressure

- Stackbuilding with VP series modular valves
- Stackable for multiple pressures on one valve stack assembly
- Tool adjustable knob can be locked
- Precise control of pressure
- G1/4" oil connection
- Remote mount PRV-3



Options

VP-Modular valves

88 ▶



Pressure switches

89 ▶



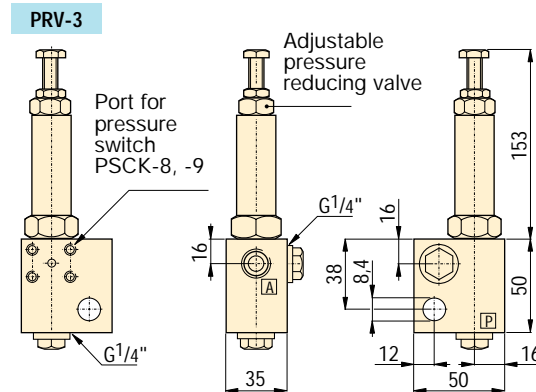
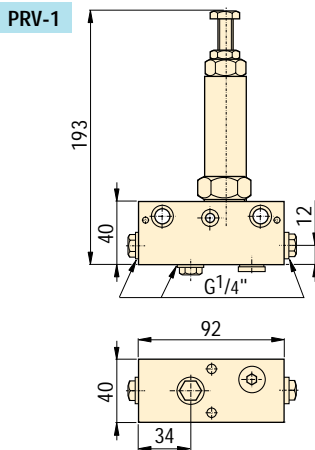
Tie rod kits

90 ▶



Fittings

110 ▶



Product selection

Mounting style	Adjustable pressure range	Maximum pressure	Built-in adjustable pressure relief valve	Model number	Oil ports	Maximum oil flow	
	bar	bar	bar		BSPP	l/min	kg
VP-series	30 - 300	350	-	PRV-1	G1/4"	7	1,6
Remote	30 - 300	350	-	PRV-3	G1/4"	7	1,3

Shown: PRV-1



PRV-series

These valves regulate system pressure for all subsequent valves, according to the adjusted pressure. Maintains a constant pressure in a secondary circuit. Includes a check valve that prevents pressure drop on secondary side.

Application

Used when a hydraulic supply with a higher pressure (primary side) must also be used for another circuit with a lower pressure (secondary circuit).

PRV-1 can be stack built between VP-series valves. PRV-3 is for remote mounting. The cartridge from PRV-3 can be removed from manifold for direct integration into gundrilled fixture.

■ PRV-1 connected with remote manifold WM-10.

