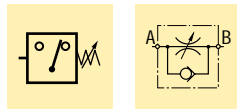


- Pressure: 350 bar
- Flow: 7 l/min @ 350 bar
- Voltage: 24 VDC

- E** Presostatos
- F** Pressostats
- D** Druckschalter

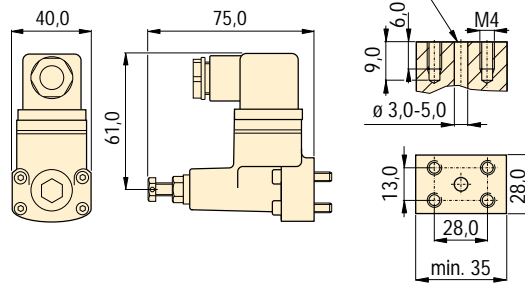


To control your hydraulic system

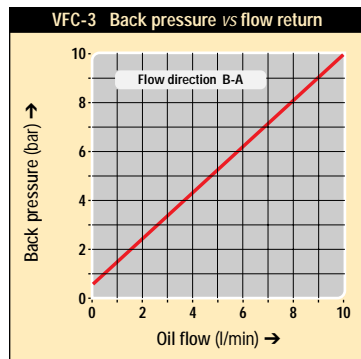
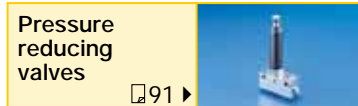
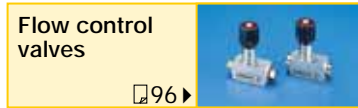
- Mounts directly into VP-series modular valves
- In-line installation
- Cartridge type flow control valve and pressure switches can be manifold mounted for remote use
- Lockable adjustment screw on PSCK models

PSCK-8, 9

Mounting dim.

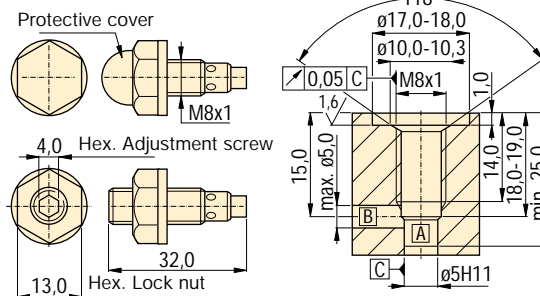


Options



VFC-3

VFC-3 Mounting dimensions



PSCK-8, 9

Adjustable pressure switches will open or close electrical contacts when the desired pressure value is reached.

Application

To open or close an electric circuit when a preset pressure value is reached. The electrical circuit is used to control further working cycles, such as actuating control valves or to terminate a working cycle. Directly mounted into Enerpac VP-series valves.

VFC-3

Screw-in throttle type valve to control the amount of oil flow to the hydraulic cylinder.

Application

Used to control cylinder speed in hydraulic circuits. Directly mounted into Enerpac VP-series valves or custom made manifolds for remote applications.

■ PSCK-8 and VFC-3 directly mounted on VP-valves.

Product selection

Solenoid voltage @ current	Model number	Hydraulic scheme	Pressure range	Deadband	Maximum oil flow
at 50/60 Hz			bar	bar	l/min
▼ Pressure switch					
24 VDC @ 2 A	PSCK-8		100 - 350	18 - 35	7
▼ Pressure switch					
24 VDC @ 2 A	PSCK-9		20 - 210	6 - 15	7
▼ Flow control valve					
Screw-in throttle valve	VFC-3		0 - 350	-	7

