

# Accumulators *Application & selection*

Shown: ACM-1, ACBS-202, ACL-202



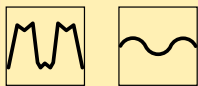
▶ Enerpac accumulators supply auxiliary pressure to dampen shock loads or to compensate pressure drop in applications where system pressure needs to be maintained.

Accumulator packages will help maintain system pressure to your fixture when separated from the hydraulic source. The gauge will display system pressure after the circuit is disconnected.

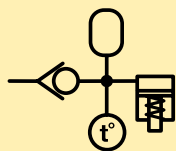
## Accumulator applications:

- Energy storage
- Circuit pulsation dampening
- Thermal expansion compensation

### Pulse dampening



### Thermal expansion



■ ACBS-202 Accumulator package used to maintain pressure on a machine tool fixture.



## Accumulators

...maintain circuit pressure

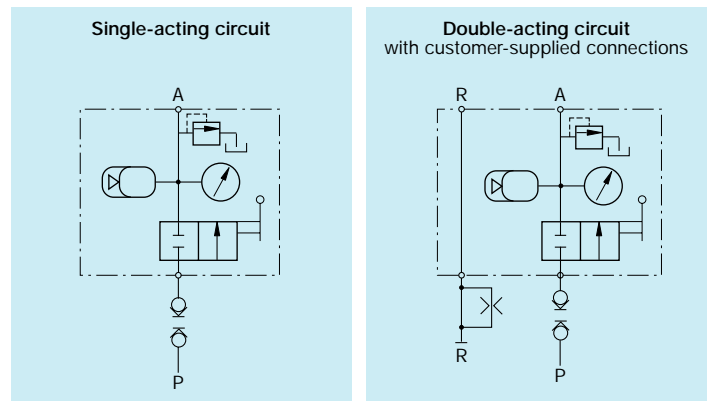
- Ideal for high frequency and rapid discharge applications
- ACL series are pre-charged to 100 bar
- Corrosion resistant bodies on ACL series
- Spring actuated accumulator for ACM-1
- High energy storage capacity in a compact package

## Accumulator coupler packages

...compact design for easy use of accumulators

- Single design accommodates both single-acting or double-acting circuit
- Relief valve fitted and ball check shut-off
- Glycerin-filled gauge included
- Supplied standard with one male coupler (AH-652)
- Optional manifold mounting. O-ring seals located on bottom of block only for single-acting circuit

## **i** Accumulator coupler package circuits



## **i** Product selection

Operating pressure	Model number	Max. rated oil volume	Gas volume	Pre-charged nitrogen pressure	Usable oil capacity
bar		cm <sup>3</sup>	cm <sup>3</sup>	bar	cm <sup>3</sup> at 350 bar
▼ Pre-charged accumulators					
0-120	ACM-1	1,6	-	-	-
100-350	ACL-22	14,7	20,0	100	8,7
100-350	ACL-202	126,2	169,9	100	73,9
100-350	ACL-502	337,6	450,0	100	196,6
▼ Pre-charged accumulator coupler packages					
100-350	ACBS-22	16,4	20,0	100	8,7
100-350	ACBS-202	163,9	169,9	100	73,9

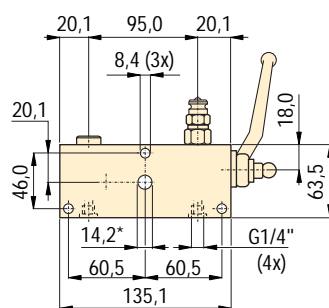
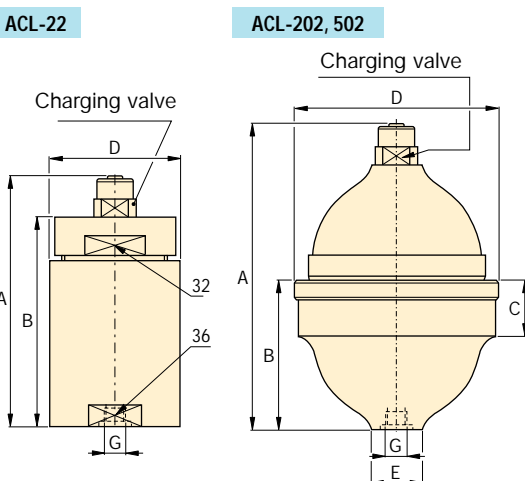
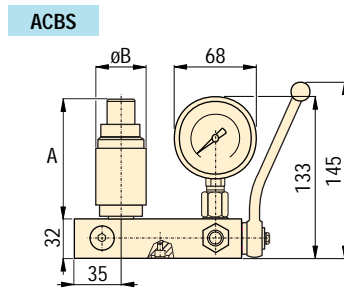
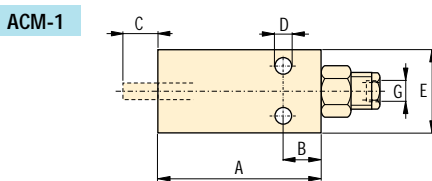
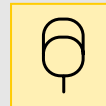


Pressure: 0 - 350 bar

Oil volume: 1,6 - 337,6 cm<sup>3</sup>

Gas volume: 20 - 450 cm<sup>3</sup>

- E** Acumuladores
- F** Accumulateurs
- D** Druckspeicher



<sup>1)</sup> Manifold hole should not exceed  $\varnothing 7,6$  mm when port is utilized.

**Product dimensions in mm** [ ]

Model number	A	B	C	D	E	G	Recommended charging tool	kg
<b>▼ Pre-charged Accumulators</b>								
ACM-1	133	19	13	6,7	45	.125-27NPT	-	1,0
ACL-22	99	66	-	42,0	-	G1/4"	WAT-2	0,6
ACL-202	137	69	29	84,5	29	G1/4"	WAT-2	1,2
ACL-502	171	89	35	114,0	40	G3/8"	WAT-2	2,8
<b>▼ Pre-charged accumulator coupler packages</b>								
ACBS-22	68	42	-	-	-	G1/4"	WAT-2	4,6
ACBS-202	106	85	-	-	-	G1/4"	WAT-2	5,4

**Options**

**Couplers** [108](#)

**High pressure filters** [109](#)

**Hydraulic oil** [109](#)

**Fittings** [110](#)

**Important**

Enerpac high pressure in-line filters are required for use with these control units to prevent damage that can be caused by contaminants that have penetrated your hydraulic fluid system.

Order an additional male coupler (AH-652) for use in double-acting hydraulic circuits.