

Shown: FZ-2023, FZ-2054, FZ-2052



▶ Fittings are used to connect all cylinders, components, power sources, tubes, gauges and hoses in a hydraulic system. Enerpac fittings provide flexible, safe and leak-free connections.

■ Multiple hydraulic line connections are easily installed with Enerpac fittings and manifolds.

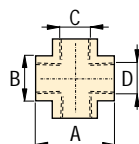
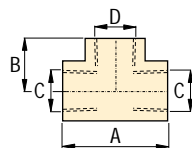
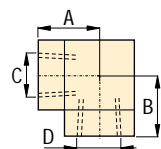
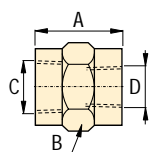
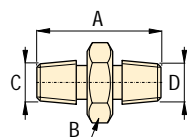
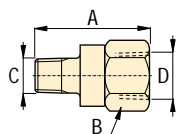


## Proper connection for hydraulic components

- Male and female BSPP, UNF, NPT threaded fittings in common sizes allow easy connection of all components
- BFZ and FZ-1000 models are 700 bar maximum pressure
- FZ-2000 models are 350 bar maximum pressure

## Product selection

From	To	Max. pressure	Model number	Dimensions in millimetres			
				A	B	C	D
		bar					
<b>▼ Adaptors</b>							
1/4" NPT	1/8" NPT	700	FZ-1642	30	19	1/8" NPT	1/4" NPT
G1/4"	1/4" NPT	700	BFZ-16411	35	19	1/4" NPT	G1/4"
G1/4"	1/8" NPT	700	BFZ-16421	31	19	1/8" NPT	G1/4"
G3/8"	1/4" NPT	700	BFZ-16323	43	24	1/4" NPT	G3/8"
G3/8"	3/8" NPT	700	BFZ-16324	43	24	3/8" NPT	G3/8"
3/8" NPT	1/4" NPT	700	FZ-1055	45	24	1/4" NPT	3/8" NPT
SAE #4	1/4" NPT	350	FZ-2007	29	19	7/16" UN	1/4" NPT
SAE #4	1/8" NPT	350	FZ-2008	25	14	7/16" UN	1/8" NPT
SAE #4	SAE #2	350	FZ-2022	29	17	5/16" UN	7/16" UN
1/2" NPT	1/4" NPT	700	FZ-1633	43	29	1/4" NPT	1/2" NPT
1/2" NPT	3/8" NPT	700	FZ-1634	43	29	3/8" NPT	1/2" NPT
<b>▼ Nipples</b>							
1/4" NPT	1/4" NPT	700	FZ-1608	38	16	1/4" NPT	1/4" NPT
3/8" NPT	G1/4"	700	BFZ-305	36	19	3/8" NPT	G1/4"
3/8" NPT	3/8" NPT	700	FZ-1617	38	19	3/8" NPT	3/8" NPT
3/8" NPT	3/8" NPT	700	FZ-1619	51	19	3/8" NPT	3/8" NPT
<b>▼ Connectors</b>							
1/4" NPT	1/4" NPT	700	FZ-1605	28	19	1/4" NPT	1/4" NPT
3/8" NPT	1/4" NPT	700	FZ-1615	29	25	3/8" NPT	1/4" NPT
3/8" NPT	3/8" NPT	700	FZ-1614	37	24	3/8" NPT	3/8" NPT
1/2" NPT	3/8" NPT	700	FZ-1625	48	29	1/2" NPT	3/8" NPT
<b>▼ Elbows</b>							
1/4" NPT	1/4" NPT	700	FZ-1638	36	24	1/4" NPT	1/4" NPT
3/8" NPT	3/8" NPT	700	FZ-1610	33	20	3/8" NPT	3/8" NPT
<b>▼ Tee</b>							
1/4" NPT	1/4" NPT	700	FZ-1637	45	24	1/4" NPT	1/4" NPT
3/8" NPT	3/8" NPT	700	FZ-1612	45	25	3/8" NPT	3/8" NPT
<b>▼ Cross</b>							
3/8" NPT	3/8" NPT	700	FZ-1613	45	25	3/8" NPT	3/8" NPT





Pressure: 0-700 bar

Threads: NPT, UNF, BSPP

For tubing: 0,25 inch / 8 mm

- E** Acoplamiento
- F** Raccords
- D** Verschraubungen

**Options**

Gauges and accessories

106 ▶



Manifolds, couplers, hoses, oil

108 ▶



**Important**

Do not exceed maximum pressure.

Use fittings and tubing in high cycle applications and areas having excessive heat or weld splatter.

To seal NPT threads use anaerobic thread sealers or Teflon paste.

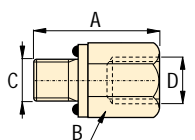
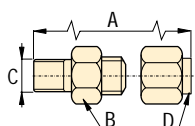
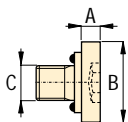
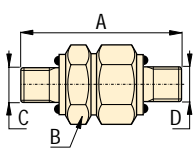
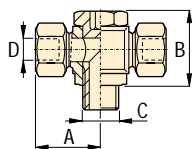
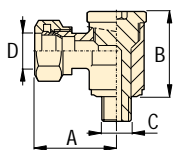
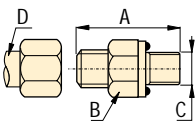
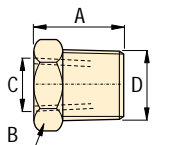
Apply Teflon tape one thread from the end of the fitting, to prevent it from winding up in the hydraulic system.

Multiple line connections are easily installed with Enerpac fittings.



**Product selection**

From	To	Max. pressure bar	Model number	Dimensions			
				A	B	C	D
<b>▼ Reducers</b>							
3/8" NPT	1/4" NPT	700	FZ-1630	19	14	1/4" NPT	3/8" NPT
3/8" NPT	G1/4"	700	BFZ-16301	19	19	G1/4"	3/8" NPT
<b>▼ Adaptors SAE to 37° Flared Tube</b>							
SAE #4	∅ 0,25"	350	FZ-2019	31	14	7/16" UN ∅ 0,25"	
SAE #4	∅ 0,25"	350	FZ-2039	35	22	3/4" UN ∅ 0,25"	
<b>▼ Adaptor SAE to 37° Flared End</b>							
SAE #2	∅ 0,25"	350	FZ-2025	32	14	5/16" UN ∅ 0,25"	
<b>▼ Swivel banjo BSPP to tube</b>							
G1/4"	∅ 8 mm	700	BFZ-307	28	30	G1/4"	∅ 8 mm
<b>▼ Swivel T-banjo BSPP to tube</b>							
G1/4"	∅ 8 mm	700	BFZ-309	28	30	G1/4"	∅ 8 mm
<b>▼ Straight union</b>							
SAE #4	SAE #4	350	FZ-2005	31	14	7/16" UN	7/16" UN
<b>▼ SAE plug</b>							
SAE #4	-	350	FZ-2006	2,5	14	7/16" UN	-
<b>▼ Adaptor NPT to 37° Flared End Tube</b>							
1/4" NPT	∅ .25"	350	FZ-2020	36	14	1/4" NPT	∅ 0,25"
<b>▼ Adaptors</b>							
G1/8"	1/8" NPT	350	FZ-2055	24	19	G1/8"	1/8" NPT
G1/4"	1/4" NPT	350	FZ-2023	32	22	G1/4"	1/4" NPT
1/4" NPT	SAE #4	350	FZ-2042	33	18	1/4" NPT	7/16" UN
G1/8"	1/4" NPT	350	FZ-2060	31	19	G1/8"	1/4" NPT

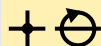


Pressure: 0-350 bar

Threads: NPT, UNF, BSPP

For tubing: 0,25 inch / 8 mm

- (E) Acoplamiento
- (F) Raccords
- (D) Verschraubungen



## Options

Manifolds, couplers, hoses, oil

108 ▶



Gauges and accessories

106 ▶

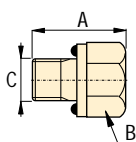
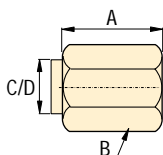
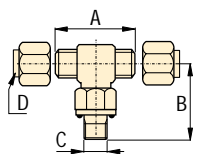
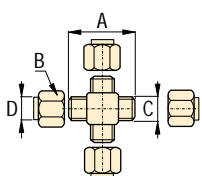
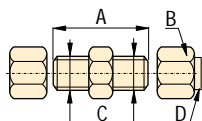
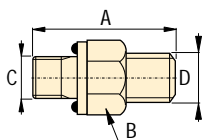
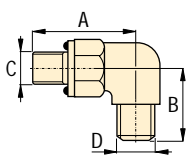
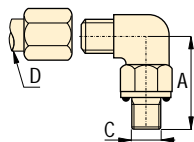


## Important

Do not exceed maximum pressure.

Use fittings and tubing in high cycle applications and areas having excessive heat or weld splatter.

High pressure fittings enable the design of hydraulic systems to meet a variety of applications.



## Product selection

From	To	Max. pressure	Model number	Dimensions			
				A	B	C	D
bar							
<b>▼ Elbow SAE to 37° Flared End</b>							
5/16"-24	ø 0,25"	350	FZ-2024	26	19	5/16" U N	ø 0,25"
7/16"-20	ø 0,25"	350	FZ-2035	26	19	7/16" U N	ø 0,25"
<b>▼ Elbow BSPP to 37° Flared End</b>							
G1/8"	7/16"-20	350	FZ-2051	26	23	G1/8"	7/16" U N
G1/4"	7/16"-20	350	FZ-2052	32	27	G1/4"	7/16" U N
<b>▼ Straight union BSPP to 37° Flared End</b>							
G1/8"	7/16"-20	350	FZ-2053	29	23	G1/8"	7/16" U N
G1/4"	7/16"-20	350	FZ-2054	32	27	G1/4"	7/16" U N
<b>▼ Straight union 37° Flared Tube Ends</b>							
1/4"	ø 0,25"	350	FZ-2033	35	13	1/4"	ø 0,25"
<b>▼ Cross Flared 37° Tube Ends</b>							
1/4"	ø 0,25"	350	FZ-2034	45	13	1/4"	ø 0,25"
<b>▼ Tee SAE to Flared Tube</b>							
SAE #4	ø 0,25"	350	FZ-2036	45	26	7/16" U N	ø 0,25"
<b>▼ 37° Flared nut and sleeve for 1/4" tubing</b>							
1/4"	ø 0,25"	350	FZ-2037	15	14	37°	ø 0,25"
<b>▼ 37° Flared cap for 1/4" tubing</b>							
1/4"	ø 0,25"	350	FZ-2038	15	14	37°	ø 0,25"
<b>▼ SAE Plug</b>							
SAE #8	-	350	FZ-2041	19	18	3/4" U N	-